



# Cleaning the PKR 251 Pressure Gauge

Terry Rogelstad

Pfeiffer Vacuum

[TRogelstad@Pfeiffer-Vacuum.com](mailto:TRogelstad@Pfeiffer-Vacuum.com)

585 248 8635

# Cleaning the PKR 251 Pressure Gauge



## Obtain Required Cleaning Parts from Pfeiffer Vacuum



Spare O-rings and  
3 igniters  
Part Number  
BN 846 239 -T



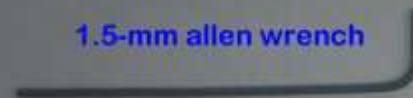
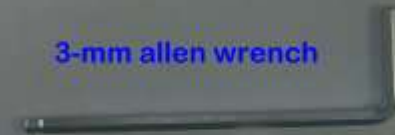
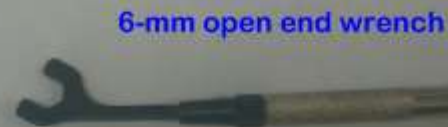
10 Spare igniters  
Part Number  
BN 845 995 -T



Igniter Insertion Tool  
Part Number  
BG 510 600

- Order PKR 251 cleaning kits from Pfeiffer Vacuum at 603-578-6500

# Gather Required Tools



## Gather Required Supplies



Clean Room Gloves



400 or 600 Grit Sand Paper



Reagent Grade (or better)  
Isopropyl Alcohol

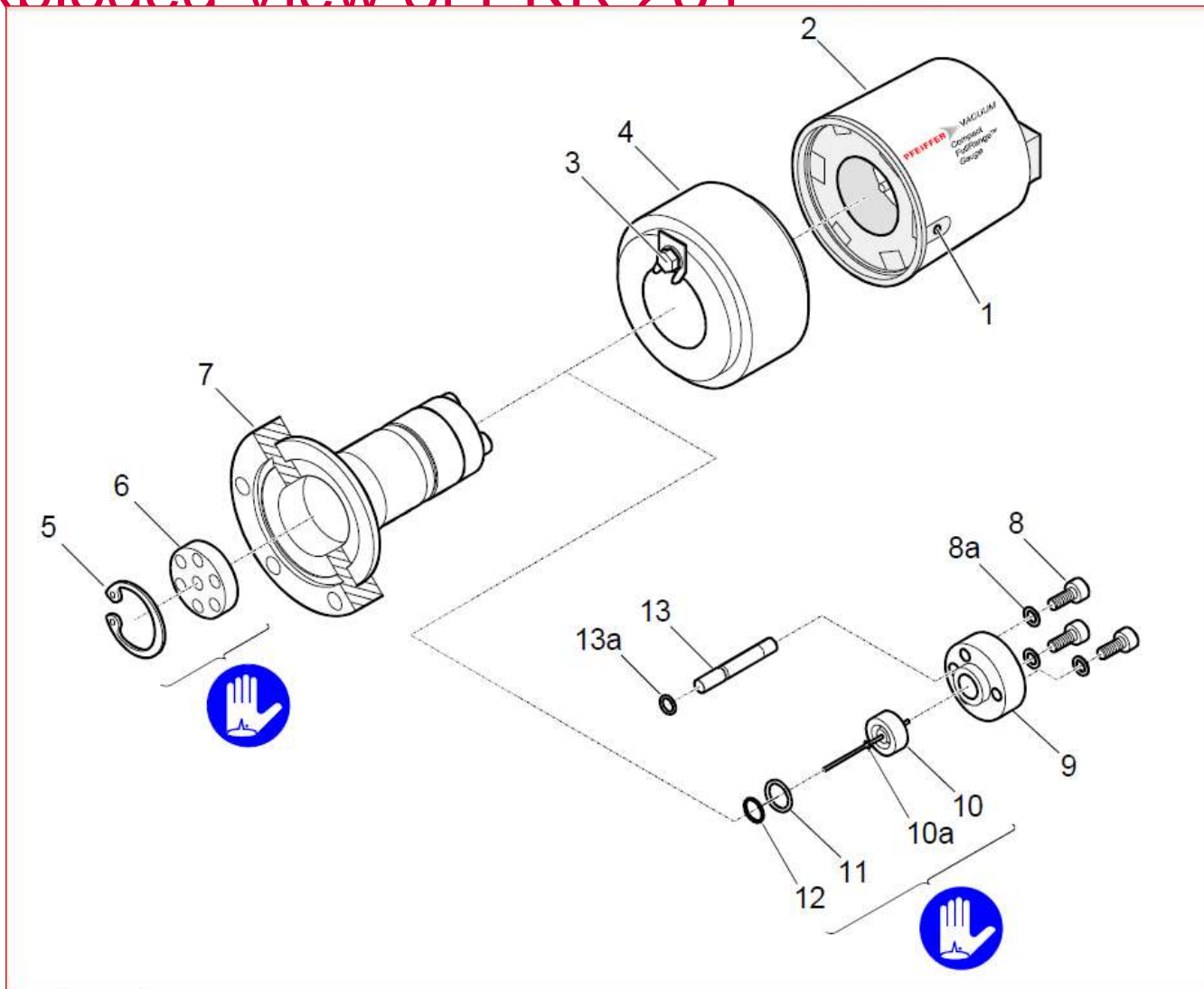




## Consult the Manual

- Read the gauge cleaning instructions in the manual.
  - PKR251: manual Part Number BG 5155 BEN, section 5.2

# Exploded View of PKR 251



## Remove Electronics Unit



Use 1.5-mm allen wrench to  
remove electronics unit (1, 2)



Remove without twisting



## Remove the Magnet



Loosen clamp screw with  
7-mm wrench



Pull off magnet, a firm effort  
Is required

## Remove the Polarity Insert



Remove Circlip (or Snap Ring) (5)  
with snap ring pliers



Remove Polarity Insert (6) with  
needle nose pliers



## Remove Anode

- Using the 3-mm Allen wrench loosen the screws (8, 8a), remove the Pirani Element (13, 13a), pressure piece (9), anode (10, 10a), FPM seal (11), support ring (12)

## ► Polish glassy coating material from inside surfaces

- Take a piece of sand paper and polish the interior surfaces of the gauge cylinder to remove the glassy coating. Make a surfaces bright metal.



## Clean the anode

- Using the tweeze, remove the ignition aid (10a) from the anode (10). Throw the used ignition aid away.
- Using sand paper, scrub the anode rod clean



## Clean items

- Wash your hands
- Put on clean room gloves
- Wash all items with isopropyl alcohol
- Let them dry
- Change your gloves

## Clean the Pirani Element

- Clean and dry the Pirani Element as described in the manual

## ► Install new ignition aid

- Install a new ignition aid (10a) as described in the manual.
- Push the ignition aid about 15 mm from the end of the anode.
- Final positioning will be done later



Ignition aid in bag



Ignition aid mounted on insertion tool ready to be installed on anode



## ► Reassemble Gauge

- Assemble the gauge as instructed in the manual.
- Before inserting the polarity insert, set the ignition aid depth, using the ignition aid insertion tool

