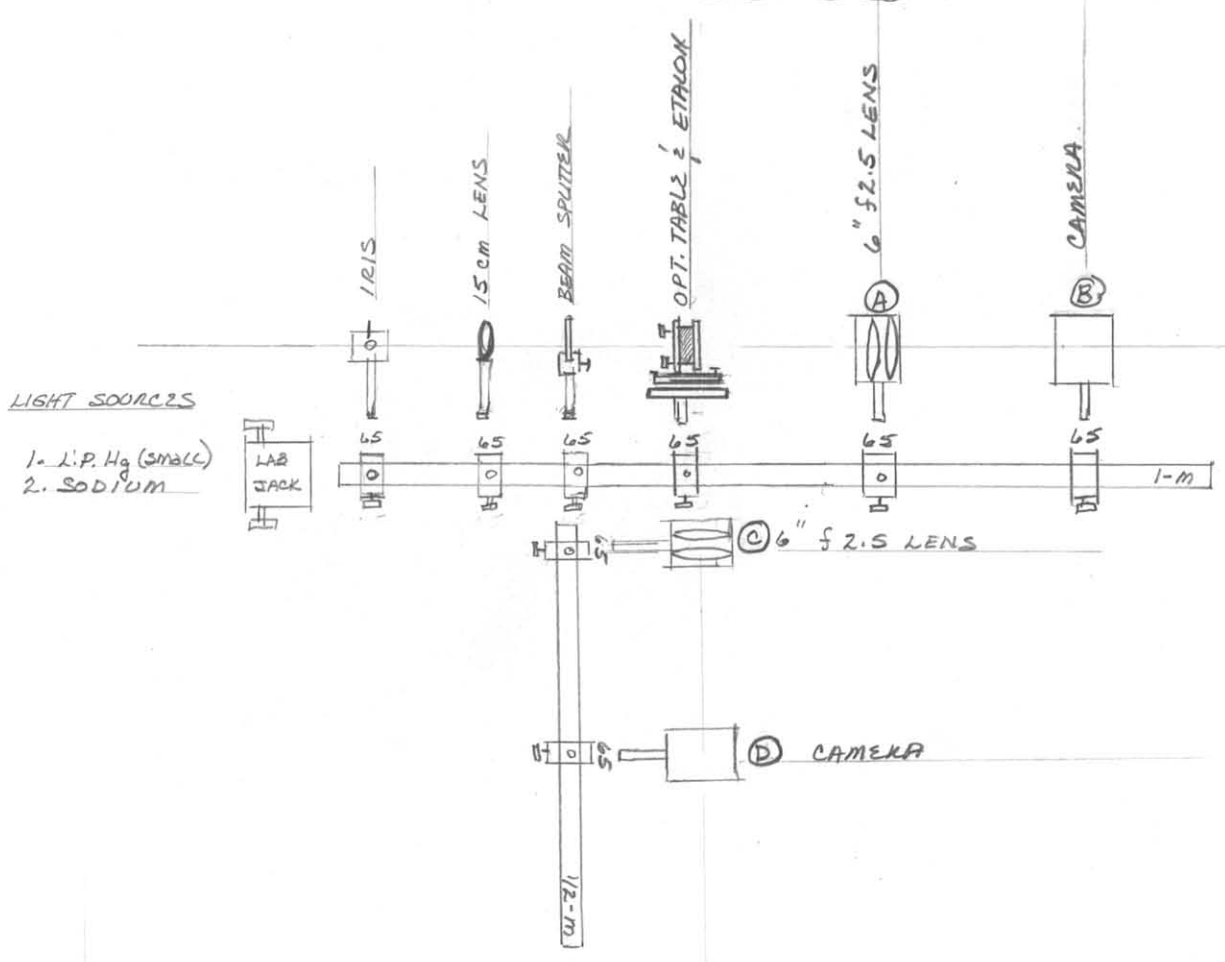
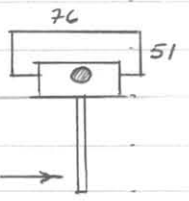
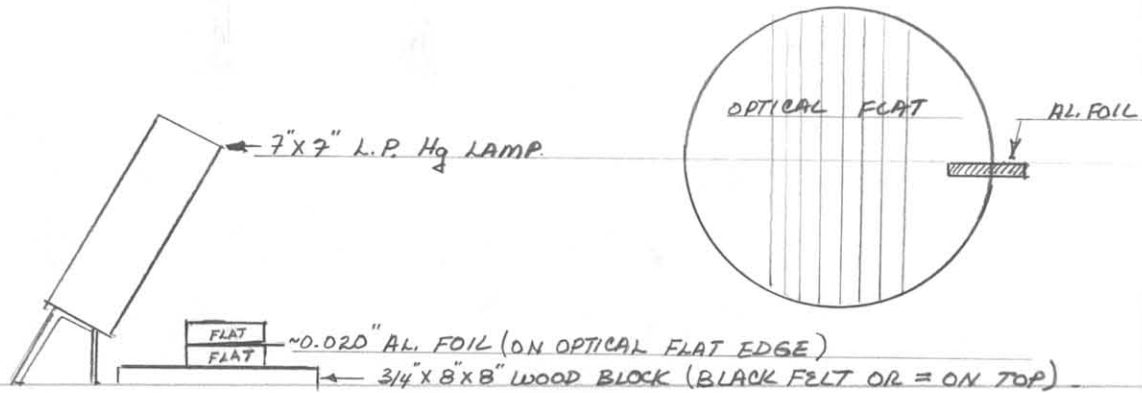


FIZEAU INTERFEROMETER



- QTY ITEM
- 2 OPTICAL RAILS (1-m & 1/2-m)
 - 6 RAIL CARRIERS (65mm)
 - 2 LIGHT SOURCES (L.P. Hg-small / Na)
 - 1 LAB JACK (FOR L.P. Hg SOURCE)
 - 1 EARLING IRIS
 - 1 POSITIVE LENS (FL = 15cm / FROM ETENDUE)
 - 1 BEAM SPLITTER (50-50 / 51 x 76 x 3 / ORIENT 76mm HORIZONTAL) →
 - 1 [OPTICAL TABLE (Φ = 4" / TH = 1/2" / 4" POST)
 - 1 [ETALON (2 1/2" x 3 1/2" / Φ ≈ 2")
 - 1 POSITIVE LENS (FL = 6" / f2.5" / FROM F.I.P. / USE @ LOCATION (A) OR (C))
 - 1 POLAROID CAMERA (600 SE / USE @ LOCATION (B) OR (D))
 - 1 SET (12) SLIDING GRIP LENS HOLDERS (FOR OTHER ETALONS)
 - 1 SET MISC. ETALONS
 - (3) SET-UPS (LARGE OR SMALL ROOM)



FIZEAU INTERFEROMETER

QTY	ITEM
1	7" x 7" LOW PRESSURE MERCURY LAMP
1	3/4" x 8" x 8" WOODEN BLOCK (BLACK FELT ON TOP FOR CONTRAST IN VIEWINGS)
2	OPTICAL FLATS ($\phi \approx 2"$)
1	~0.020 ALUMINUM FOIL STRIP (SEE ABOVE)
1	6" PLASTIC RULER (MEASURE FRINGE SEPARATION / $\lambda/2$ PER FRINGE)
1-8	SET-UPS

ALSO

1	INTERFERENCE VIEWER (FROM ELEM. LABS)
2	OPTICAL FLATS ($\phi \approx 3"$)
2	GAUGE BLOCKS (24 MM)
1	NEWTON'S RINGS APPARATUS