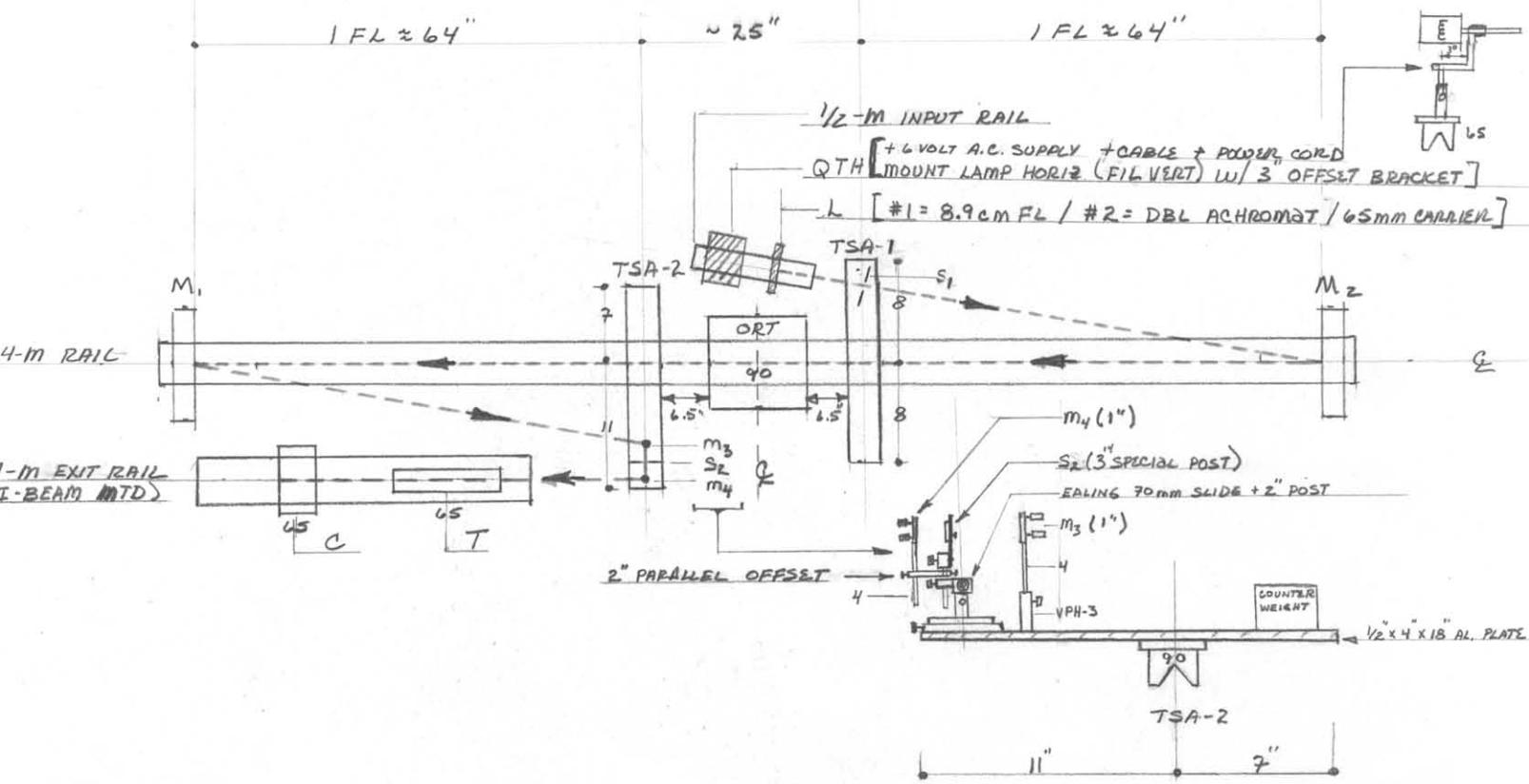


SCHLIEREN

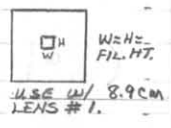


QTY ITEM

- 1 (4-M) OPTICAL BENCH [MTD ON I-BEAM / (+2) LEVELER BLOCKS (0" X 8" X 8")]
- 2 SCHLIEREN MIRRORS [(M₁ + M₂) / D = 8" / FL = 64" / MTD ON (2) 90mm CARRIERS]
- 1 (TSA-1) TRANSVERSE SLIDE ASSEMBLY (ON 90mm CARRIER + COUNTERWEIGHT)
- 1 (TSA-2) TRANSVERSE SLIDE ASSEMBLY (ON 90mm CARRIER + VPH-3 + COUNTERWEIGHT)
- 1 (TSA-1) COMPONENTS [SEE ABOVE / (S₁ ONLY + 3" SPECIAL POST)]
- 1 (TSA-2) COMPONENTS [SEE ABOVE]
- 1 (1/2-M) INPUT RAIL [MTD ON I-BEAM W/ LEVELER FEET]
- 1 (1/2-M) COMPONENTS [QTH ASBLY (SEE ABOVE) + L (DO #1 THEN REPLACE W/ #2)]
- 1 (1-M) EXIT RAIL [MTD ON I-BEAM W/ LEVELER FEET]
- 1 (1-M) COMPONENTS [C (600 SE POLAROID CAMERA + 4" POST) + T (2" TELESCOPE + 5" POST)]
- 1 (ORT- OPTICAL RAIL TABLE ON 90mm CARRIER)

ALSO

- 1 SET HEAT SOURCES [ALCOHOL LAMP + MATCHES] + (SOLDERING GUN) + (HEAT GUN) + (DESK LAMP) + (HAND)
- 3 VARIACS (FOR QTH LAMP INTENSITY CONTROL + POWER CORDS)
- 3 GLASS SHEETS (0" X 10" X 11" ON OAK STAND)
- 3 AUTO COLLIMATION MIRRORS (0" X 5" X 5" / FROM THICK LENS EXP.)
- 3 2 X 2 SLIDE HOLDERS (STUDENTS CUT OWN MASK : IRIS + SCREEN)
- 2 BOXES # 667 B 1/2 W. POLAROID FILM (20 EXP / BOX)



SCHLIEREN OUTPUT STAGE DETAIL

